



CLAIRITY™+

nLight Wired



User Guide

Version 1.0

Table of Contents



Overview	3
Startup Process	3
Enable Bluetooth® on Your Device	3
Connecting to an Access Point.....	4
Access Point Screen.....	4
Group Overview Screen.....	5
Viewing Connected Devices	5
Creating and Configuring Channels.....	6
Configuring a Behavior Zone (Channel)	6
Creating a Behavior Zone (Channel).....	7
Creating and Configuring a Scene	7
Creating a Preset Scene	7
Configuring an Existing Preset Scene.....	8
Modifying Device Settings.....	8
Setting Trim Levels.....	9
Calibrating Daylighting	9
Restoring Devices to Factory Defaults.....	10
Unsupported Devices	10
User Support.....	11

CLAIRITY™+ is a free Bluetooth-based cross-platform mobile application that allows configuration and troubleshooting of select Acuity Brands solutions through compatible tablets and smartphones. The mobile application is designed to aid in meeting energy code requirements and is optimized for efficient onsite startup and maintenance by enabling ease in modification of settings and operation of the fixtures, sensors, as well as wall switches.

The nLight® Wired portal of CLAIRITY+ provides the means to configure stand-alone nLight Wired zones using Bluetooth® Low Energy conveniently and cost-effectively. This portal has been optimized for small to medium nLight installations. Through this portal, users can modify occupancy, daylighting and setting trim levels of devices.

The following notes should be observed when using CLAIRITY+ with a nIO BT:

- If wired in a system that includes bridges and gateways, the nIO BT will stop beaconing and will not be visible/accessible in CLAIRITY+.
- Refer to using SensorView™ if configuring,
 - An nLight zone exceeding 50 devices.
 - CLAIRITY+ will work for the largest nLight zones, however, it may be difficult to manage the on a mobile device.
 - A system that includes Fresco units.



This document explains features and common practices for the nLight Wired portal of CLAIRITY+.

Startup Process

nLight Wired is a CAT 5e low voltage-based solution that delivers distributed intelligence with all lighting control actions (i.e., On/Off, Raise/Lower, Occupancy/Daylighting, etc...). The solution is very flexible and easy to install. Its devices operate with a specific out-of-the-box behaviors to aid in code compliance, however, can further modified during installations using the CLAIRITY+ mobile application.

While there are other ways to navigate through CLAIRITY+, the following workflow is recommended for proper configuration of devices.

NOTE A definition of terms section is located near the end of this guide.

1. Install and energize the nLight Wired devices.
2. Download and install the CLAIRITY+ application.
3. Confirm that the Bluetooth-enabled nLight device is wired to the nLight zone.
4. Ensure the Bluetooth-enabled nLight device is part of the selected nLight zone and proper distance is met from is and the mobile device.
 - We recommend a maximum of 10 feet distance from the nLight enabled Bluetooth device, with no obstruction for best performance.
5. Using the CLAIRITY+, navigate to the nLight Wired portal.
6. Discover and select access point.
7. Enter access point passcode, if required.
8. If desired,
 - Create behavior zones to modify channel tracking and broadcasting for selected devices.
 - Create scenes for scene capable devices.
 - Modify device settings (i.e. trim levels, photosensor).
 - Factory reset all devices in the nLight zone.



Enable Bluetooth® on Your Device

Bluetooth® is required to effectively operate CLAIRITY+. Upon installing the application, it is important to ensure that Bluetooth® is enabled on the mobile device. The following steps are guidelines on how to enable Bluetooth® on Android and iOS devices.

NOTE Disconnect from any existing Bluetooth devices before commissioning.

For **Android** devices:

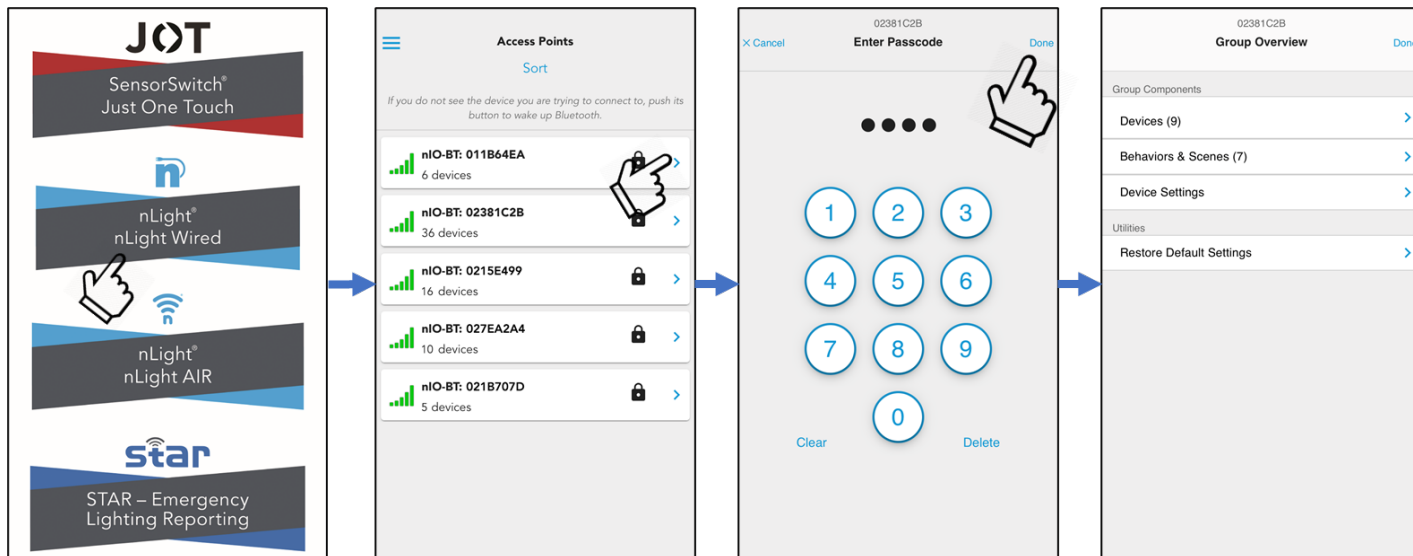
1. Tap on **Settings** on your device.
2. Look for **Bluetooth** or the Bluetooth symbol and tap it.
3. Tap or swipe the option to enable so that is in the **"On"** position.
4. Close out of Settings.
 - a. A Bluetooth icon at the top of your screen will indicate when Bluetooth is turned on.

For **iOS** devices:

1. Tap on **Settings**
2. Tap on **"Bluetooth"**
3. Flip the On/Off button to toggle **"On"**
 - a. Once complete, look for the Bluetooth icon in the status bar of your device.

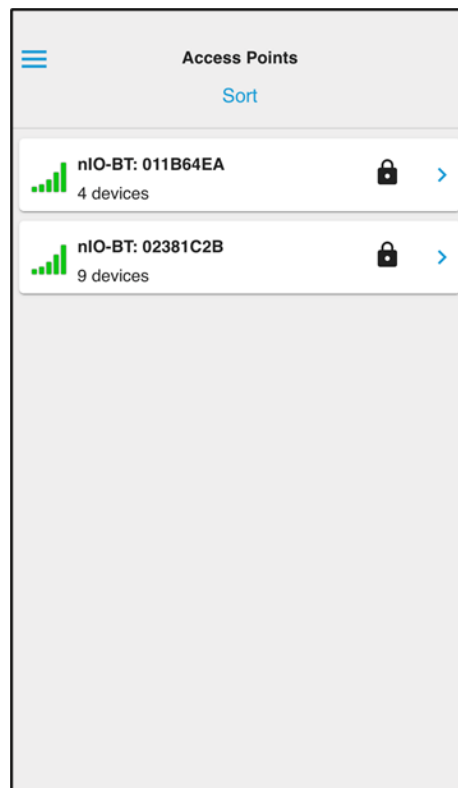
Connecting to an Access Point

To connect to an access point through the CLAIRITY+ application, one must navigate to the nLight Wired portal; select and log in to the access point using its designated password. Upon successful log in, the app will redirect to the Group Overview screen.



Access Point Screen

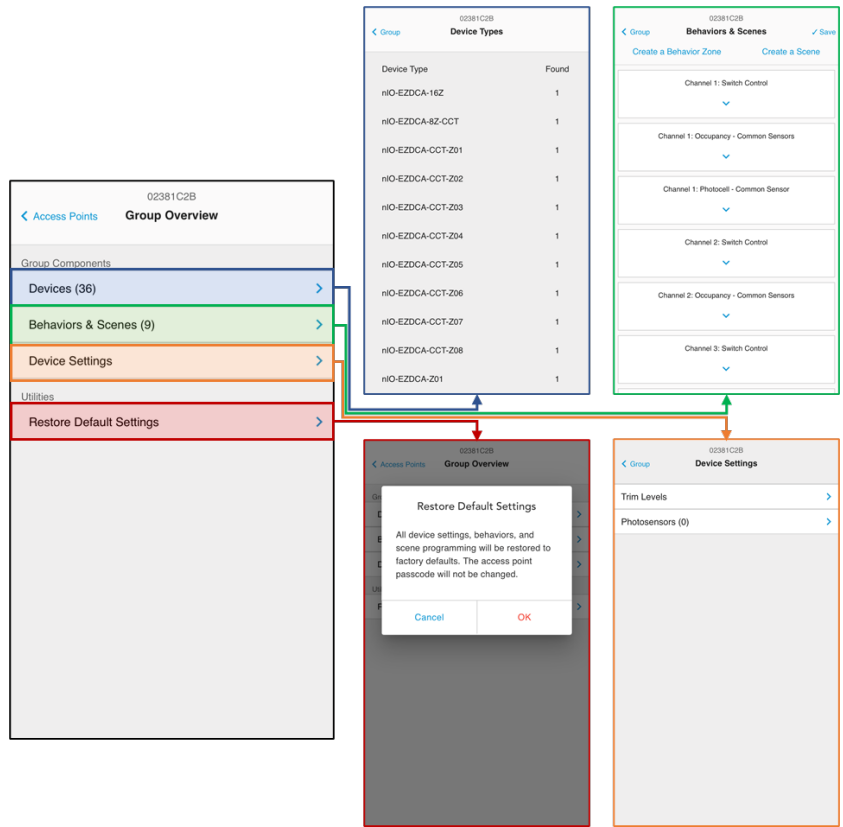
The Access Point screen displays all connectable devices within operating range of the mobile device. As devices are discovered, they will be listed based on signal strength of initial discovery. As the mobile device is repositioned, the signal strength will be updated to reflect in real-time, however, the display order will not be adjusted. Users can re-sort the list of discovered devices by pressing the **"Sort"** button.



Group Overview Screen

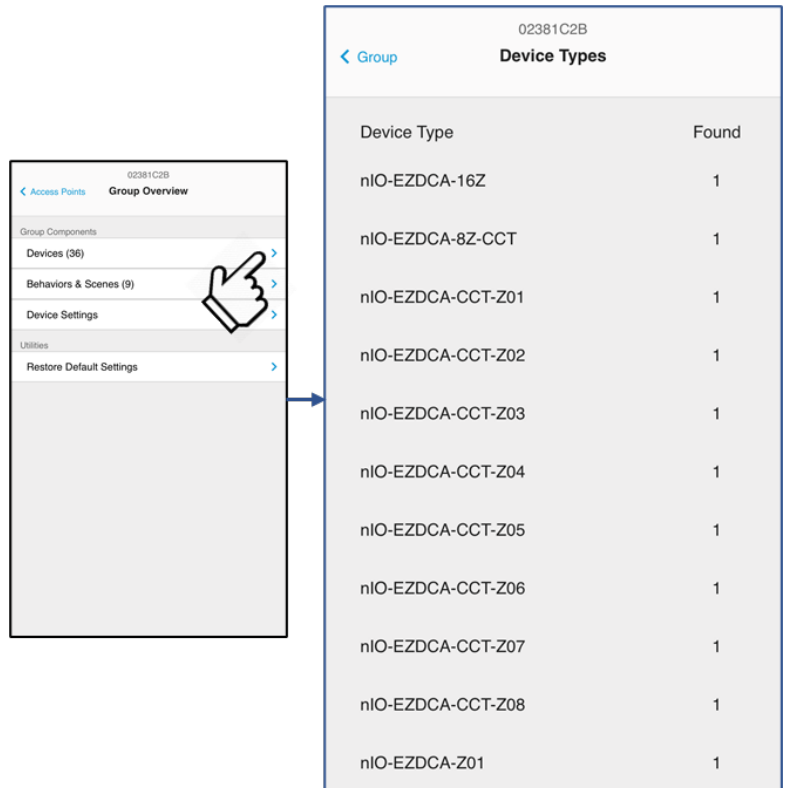
The group overview screen is the primary landing screen for the access point and devices connected to it. Through this screen, users have the access to:

1. View the list of devices connected to the access point
2. Configure the access point and devices connected to it
3. Reset all devices connected to the access point to their factory defaults



Viewing Connected Devices

Users can view the list of devices connected to the access point through the Devices screen. From this screen, all devices connected are listed grouped by their device types

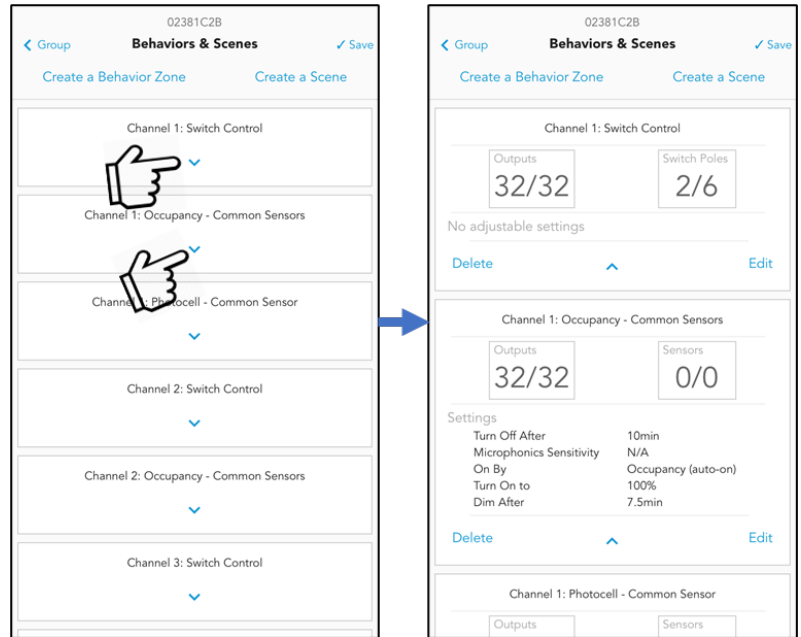


Creating and Configuring Channels

The CLAIRITY+ application supports the creation and configuration of all types of nLight Wired channel (Switch, Occupancy, Photosensor) through the use of Behavior Zones. From these behavior zones, connected devices can be configured to track, or broadcast, to channels by navigating the **"Behaviors and Scenes"** screen.

Upon loading the screen, existing behavior zones are displayed as a list of collapsed items that can be expanded to provide summaries of devices associated to them and additional settings.

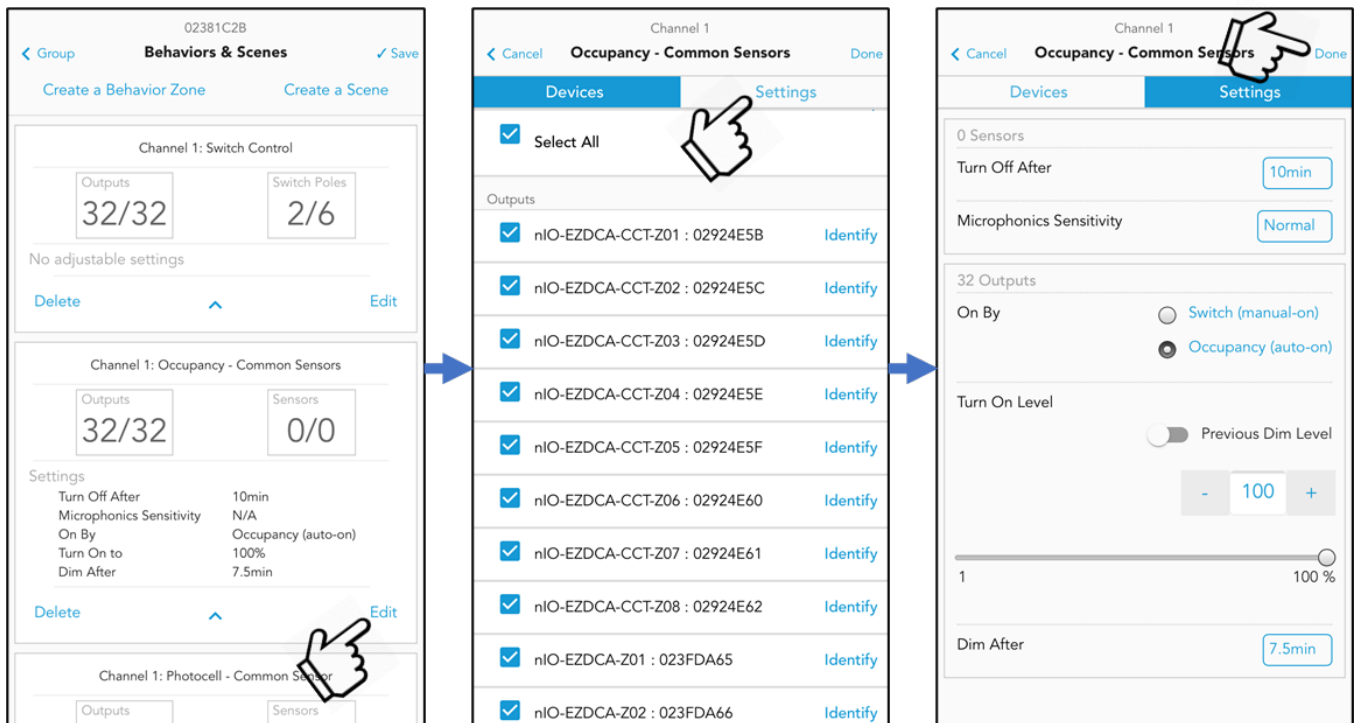
More details can be accessed by selecting to perform the **"Edit"** operation.



Configuring a Behavior Zone (Channel)

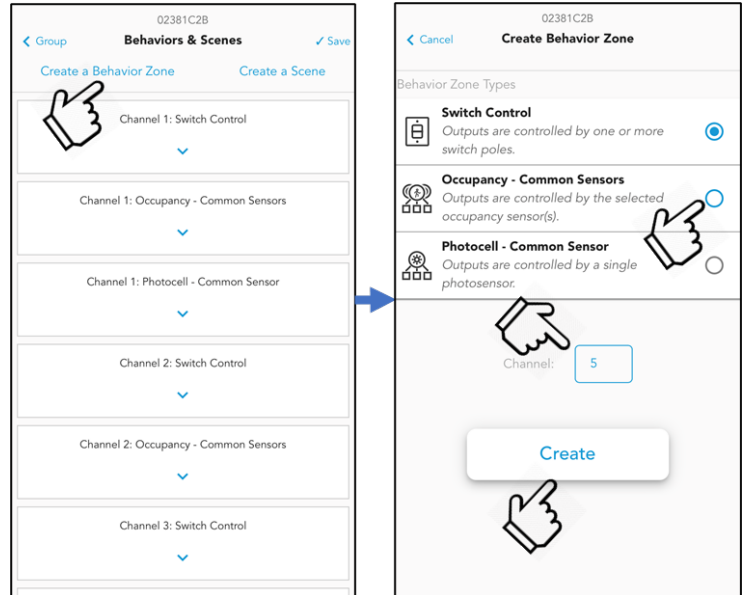
Behavior zones can be edited by selecting the **"Edit"** button in its expanded view. From the behavior zone editing screens, one can select devices to broadcast and track the behavior, while also adjusting settings associated to the zone (if applicable).

The following workflow illustrates how to configure an existing behavior zone.



Creating a Behavior Zone (Channel)

Behavior zones can be created through the “**Create a Behavior Zone**” button in the “**Behavior & Scenes**” screen. Upon initiating this activity, users are prompted to select a behavior type (between Switch, Occupancy and Photosensor), as well as select the channel number that will be associated to the behavior zone.



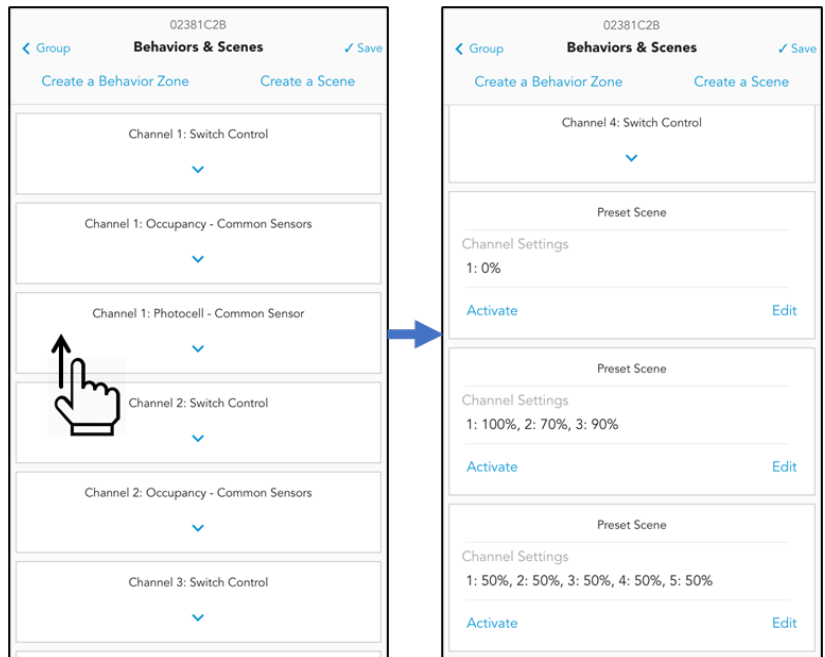
Creating and Configuring a Scene

CLAIRITY+ allows the creation and configuration of preset scenes for scene capable devices. These preset scenes function such that when activated from capable devices, the associated channels adjust to the scene’s programmed “go-to” levels.

Preset scenes can be accessed in the “**Behavior & Scenes**” screen. Users are able to either create, activate or initiate the process of editing an existing preset scene through this screen. Already created scenes can be found under the existing behavior zones and can be viewed by swiping up until the first Preset Scene block appears.

NOTE Ending connection/session with a BLE device will remove created preset scenes.

CLAIRITY+ does not store preset scenes to its memory. Though the scenes are programmed to the scene capable devices and can be activated at any time, the app loses the scene configuration from its memory when users end connection to the BLE, or exit the app.

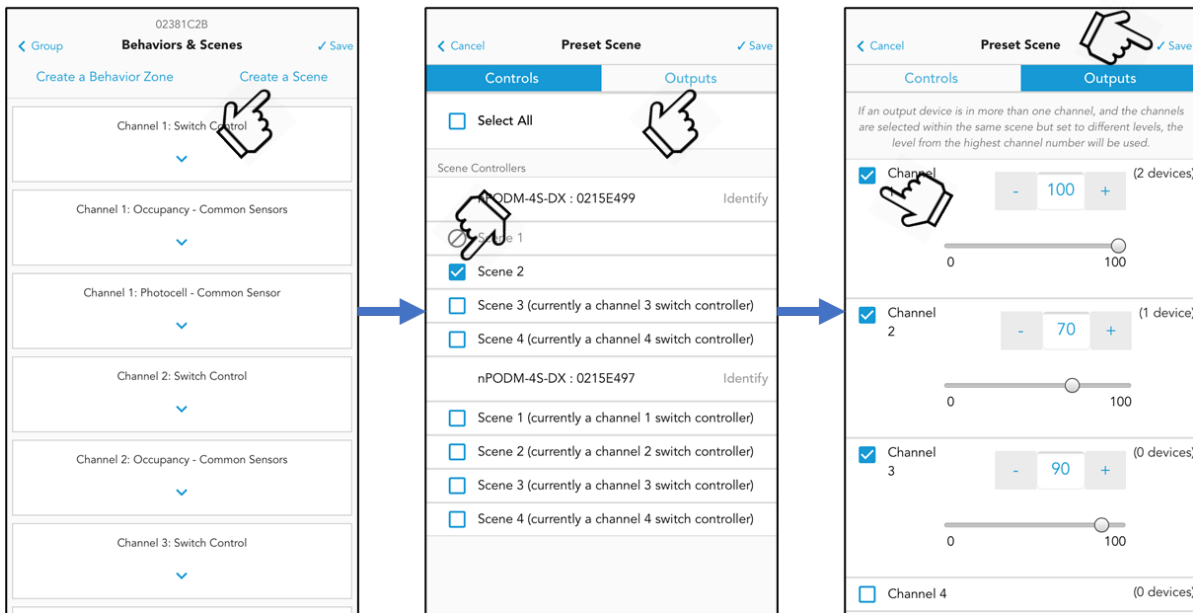


Creating a Preset Scene

Preset scenes can be created through the “**Behavior & Scenes**” screen by clicking the “**Create a Scene**” button. Users will be redirected to a screen to select the scene devices to carry the new channel “go-to” level programming. At least one scene device must be assigned for the preset scene to be created.

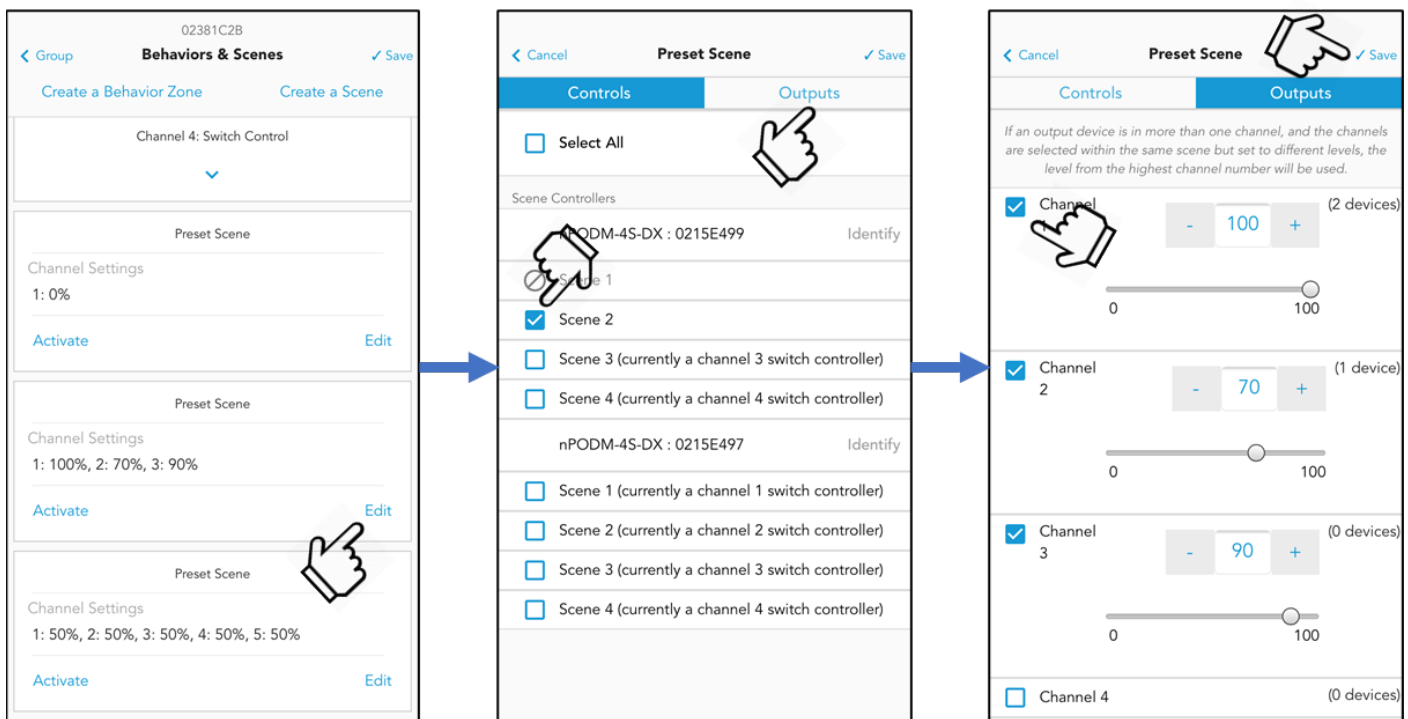
The “**Outputs**” tab hosts all available switch channels and enable use the ability to associate them to the preset scene, as well as dedicate the light levels they will be going to when the preset scene is activated. Light levels can be adjusted through the slider, the input box as well as arrows near the input box.

The following workflow illustrates how to create a preset scene.



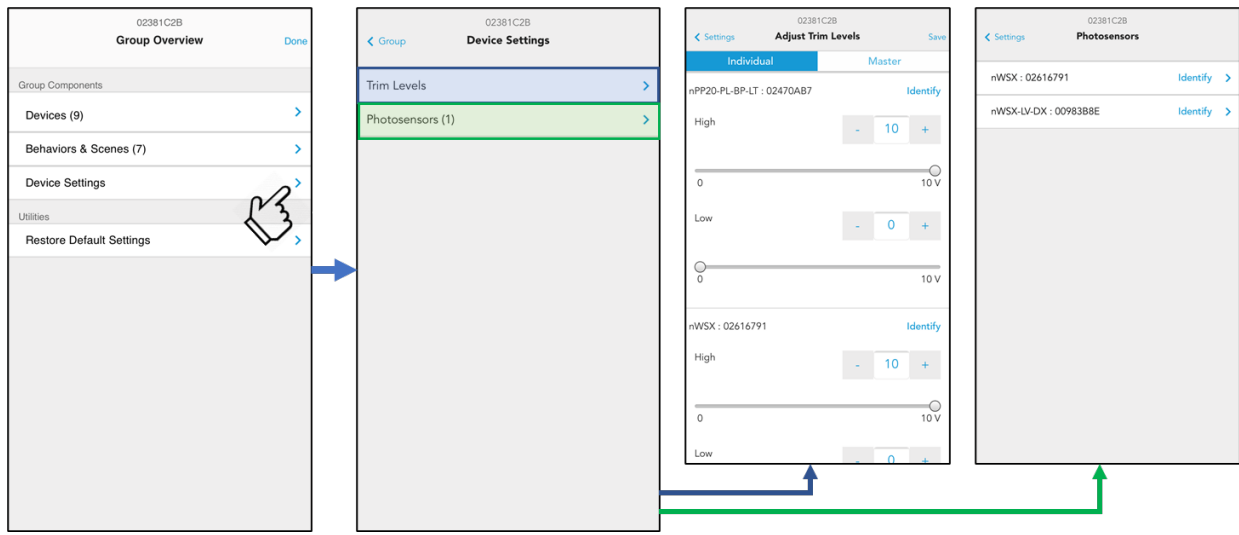
Configuring an Existing Preset Scene

Preset scenes can be modified through the **"Behavior & Scenes"** screen by clicking the **"Edit"** button on the selected scene. Users will be redirected to the **"Preset Scene"** screen to where they will be able to edit scene devices and channels associated to the scene.



Modifying Device Settings

CLAIRITY+ allows limited configuration of settings for devices connected to the access point in the **"Device Settings"** screen. From this screen, users are able to do basic configuration of settings such as modifying trim levels and calibrating photosensors.

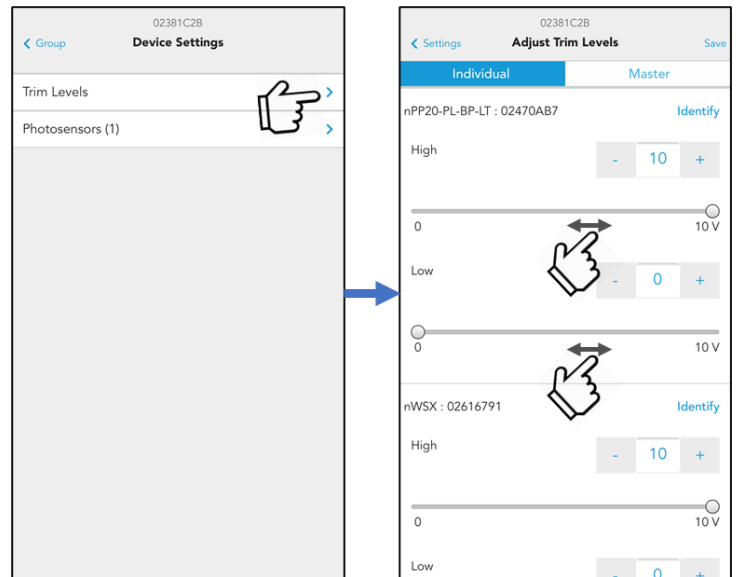


Setting Trim Levels

CLAIRITY+ allows the configuration of High- and Low-end trims of output devices, however, does not affect a device's ability to turn off. Trims function such that the devices will never go higher than its trimmed value regardless of a control input from a wall switch or photosensor while serving to reduce the lighting energy consumption or to improve space occupant comfort in over-lit areas.

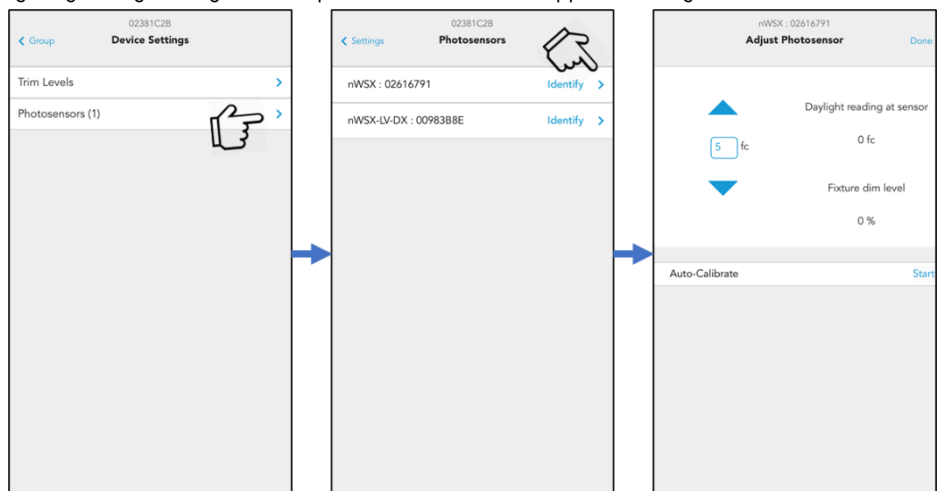
Trim level configuration can be accessed through the "Device Settings" screen. Users can begin to modify connected device's trims by navigating to the "Adjust Trim Levels" screen through the "Trim Levels" option.

Each dimming capable device will appear in the "Individual" tab with two sliders – one for High-end trim and the other for Low-end trim. Users are able to modify these levels by adjusting the slider levels.



Calibrating Daylighting

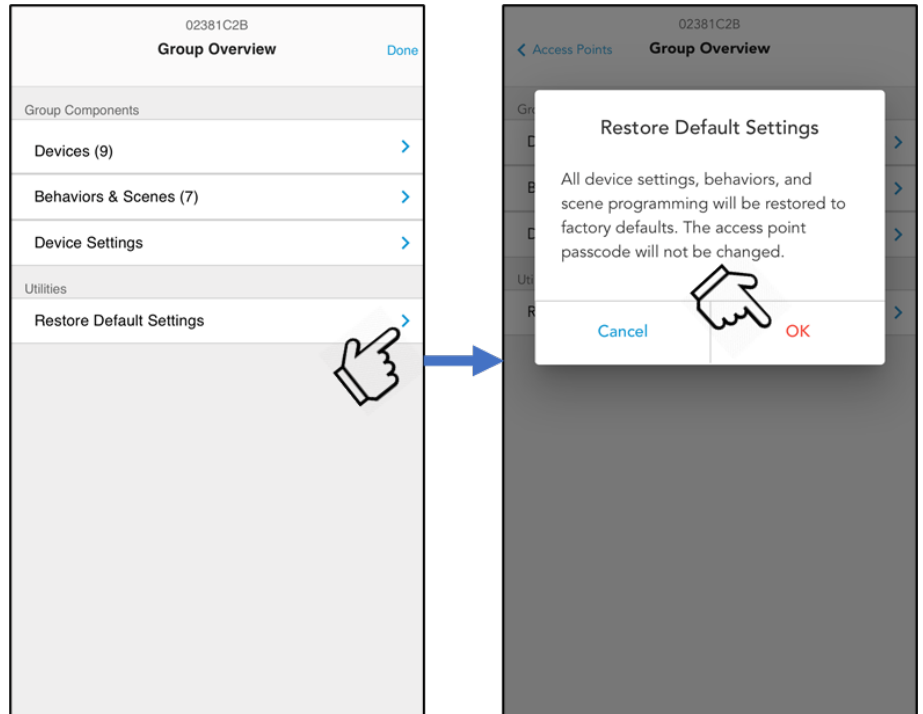
CLAIRITY+ is equipped to enable the calibration of daylighting through configuration of photosensors. From this app, users can get live feedback on the light level sensors are reading, while being able to make real-time setpoint (the light level the sensor is attempting to maintain) adjustments to the selected photosensor. These features are accessed by navigating to a device's the "Adjust Photosensor" screen



Restoring Devices to Factory Defaults

CLAIRITY+ carries the ability to bring all devices connected to the access point back to their factory defaults and out-of-box operation. This is done through the "Group Overview" screen by selecting the "Restore Default Settings" button.

The "OK" button must be pressed from the confirmation screen to continue with the process of restoring factory defaults.

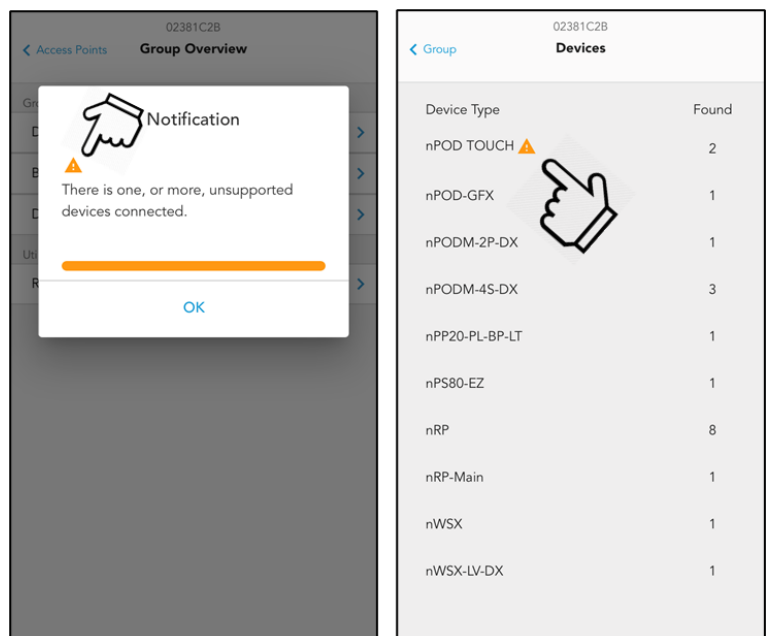


Unsupported Devices

While the CLAIRITY+ application supports most nLight devices, the products below are not. When connecting to an access point containing unsupported devices, users will be notified, and unsupported devices will be listed with unique identifiers in the "Devices" screen. Though unsupported devices will appear in the list of discovered devices, they are not configurable

The following are devices not supported:

- nPOD TOUCH - Capacitive Touchscreen Wall Switch
- nDTC - Digital Time Clock
- nPS 80 - Bus Power Supply
- nIO EZDCA 16Z - Modulus 16 Zone Static White (nIO)
- nIO EZDCA 8Z CCT - Modulus 8 Zone Tunable White (nIO)
- PWNLT SNAPSHOT - nLight® Enabled PWNLT DMX Snapshot Controller
- nIO X - External Digital System Interface



User Support

For support with your nLight control system and the CLAIRITY+ mobile app, contact Acuity Technical Support at 1-800-535-2465 or nLight-Support@acuitybrands.com.